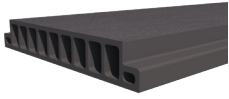


# Technical Information Sheet

## d<sup>2</sup> Dura Slab Type 100

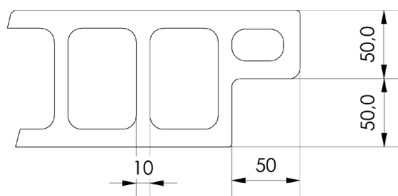
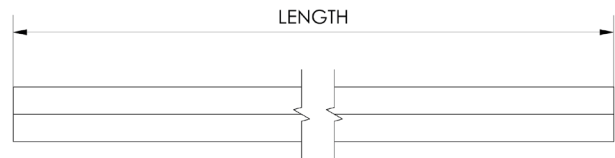
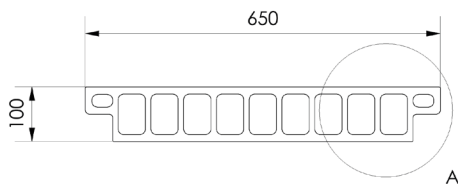
### Product Description



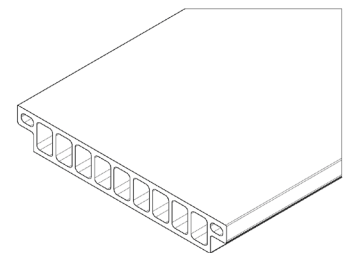
Dura Slab structural flooring panels are suitable for use as trench and access covers and heavy duty floor slabs, both for new build construction and refurbishment applications. Their lightweight design dramatically reduces the cost of installation, maintenance and transport versus alternatives such as steel or concrete and panels can be fitted with in-built lifting eyes, making them easy to deploy, without compromising on strength and safety. Part of Dura Composites d<sup>2</sup> product range, Dura Slab 100 achieves a Class B fire rating according to BS EN 13501-1 and has an advanced anti-slip surface tested to an incredible 1 million footfalls.

### Product Details

Gritted Surface	Length (mm)	Width (mm)	Height (mm)	Colours / Product Codes	Panel Weight (kg)	Weight (kg/sqm)
Top	2460	650	100	Grey (DG04008)	136	85
	2800			Dark Grey (DG04010), Grey (DG04006)	142	78
Bottom	2460			Grey (DG04009)	136	85
	2800			Dark Grey (DG04011), Grey (DG04007)	142	78



DETAIL A



### Product Applications

Common applications for d<sup>2</sup> Dura Slab Type 100 include trench covers, industrial flooring, work platforms, tank covers, service duct covers, bridge decking, mezzanines and walkways.

### Packaging

Please see the below table for relevant packaging information for d<sup>2</sup> Dura Slab Type 100.

Packaging	Product Information
Maximum Products Per Pallet	8
Pallet Dimensions (mm)	2800 x 1200 x 680
Pallet Weight (kg)	1609

### Colours

Please see below for our d<sup>2</sup> Dura Slab RAL colours.

Dura Colours	RAL Number
Dark Grey ●	7043
Grey ●	7047

### Material

Glass Reinforced Polymer (GRP) Pultruded d<sup>2</sup> Dura Slab Profiles are manufactured by combining resins with pure glassfibre reinforcement. They are formed and cured in a continuous process creating a product of extraordinary strength and resilience d<sup>2</sup> Dura Slab is resistant against a wide range of chemicals and temperature spectrums. Material samples are available on request, along with a copy of our chemical resistance data.

## Test Performance Overview

4S Slider Pendulum Test	BS EN 13501-1	BS 4592	FACTA	EN 124
PTV: 72 (dry)*, 62 (wet)*	Class B	Compliant	Class E	Class D

\*Maintains 95% of slip resistance after 1.1 million footfalls.

For more information please refer the Technical Installation Manual or speak to your Dura Composites Representative.

## Safety Information

Use diamond tipped tools for cutting and wear mask and goggles when cutting or grinding. Cover exposed parts of the body. Wear gloves when moving or lifting. Product itself is not considered a hazardous waste. Please ensure that you abide by local laws and procedures regarding disposal if you choose not to upcycle or re-use your product at the end of its initial lifecycle.

## Common Fixing Options

Some of the most common stainless steel fixing options are shown below. For a full list of fixings please see the d<sup>2</sup> Dura Grating brochure.



S/L/XL Dome Washer  
(BFX01005/BFX01003/  
FX01004)



CAM Cover  
(DRP0112)



Deep Recessed  
Collar (FX01001)



Shallow Recessed  
Collar (FXM8SRC)



J Clamp  
(FX01128/9)

## Warranty

25 year limited warranty available. Please register your product with us within 30 days of your invoice date. Visit [www.duracomposites.com/warranty](http://www.duracomposites.com/warranty).